



Mosaic Knitting: How to Make Placemats

with Edie Eckman



Mosaic knitting is a slip-stitch pattern that allows you to work interesting and complex-looking geometric designs using only one color per row. While it can seem tricky to wrap your head around, once you get the basics, you can do any mosaic pattern under the sun. Edie Eckman teaches how to read mosaic-knitting charts, demonstrating four different stitch patterns on swatches. After you take this class, you'll be ready to make placemats (PDF pattern included) or any other mosaic project you choose.

What You'll Learn:

- Follow mosaic chart patterns
(Edie demonstrates Little Squares, Fretted Band, Lattice, and Jerusalem Cross)
- Reverse dark and light stitches
- Refer to your previous stitches to anticipate patterns

Continued →

Materials:

Cascade Yarns Ultra Pima (100% pima cotton, 3.5 oz/100 g, 220 yd/200 m), 1 skein each of 2 colors for each placemat.

Colors should be highly contrasting in order to see the pattern. Each placemat takes just over ½ skein of each color, so you should be able to get 3 placemats from 2 skeins of each color.

Colors shown are:

- Color #3719 Buff (A)
- Color #3735 Jade (B)
- Color #3745 Bright Olive (C)
- US size 6 (4 mm) knitting needles
- Tapestry needle
- Scissors

Size:

16" [40.5 cm] wide x 12" [30.5 cm] high

Gauge:

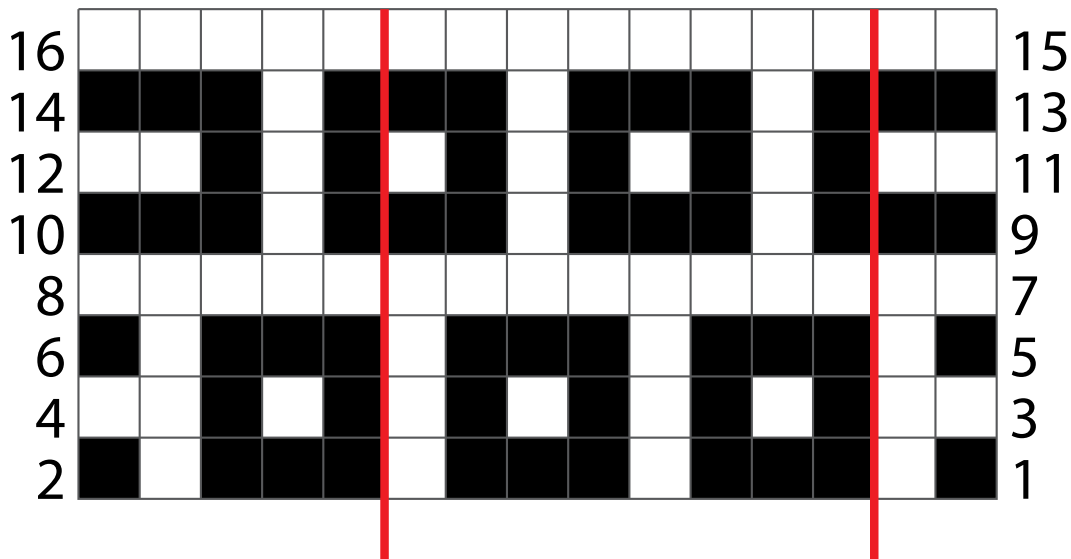
24 sts and 52 rows = 4" [10 cm] in mosaic pattern, blocked

Note: Gauge is approximate

Abbreviations:

- CC:** Contrasting color
MC: Main color
rep: Repeat
st(s): Stitch(es)

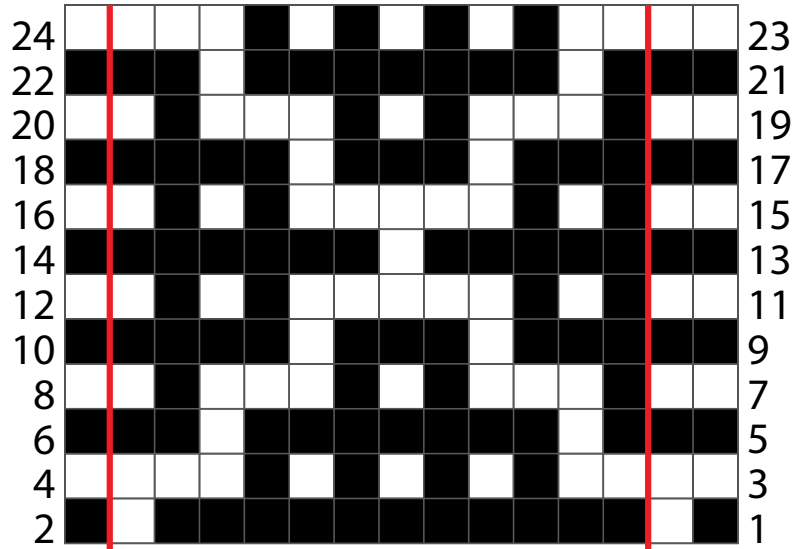
Little Squares



8-st repeat

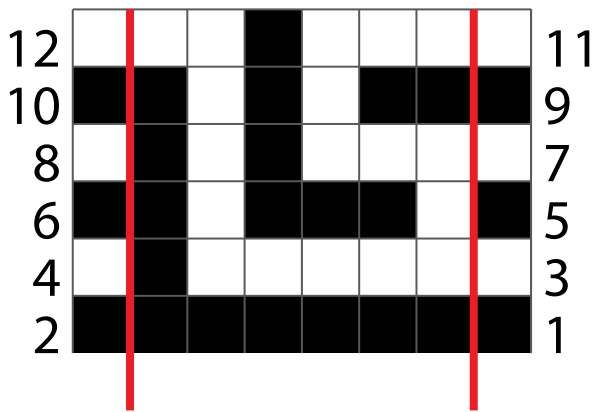
Continued →

Lattice



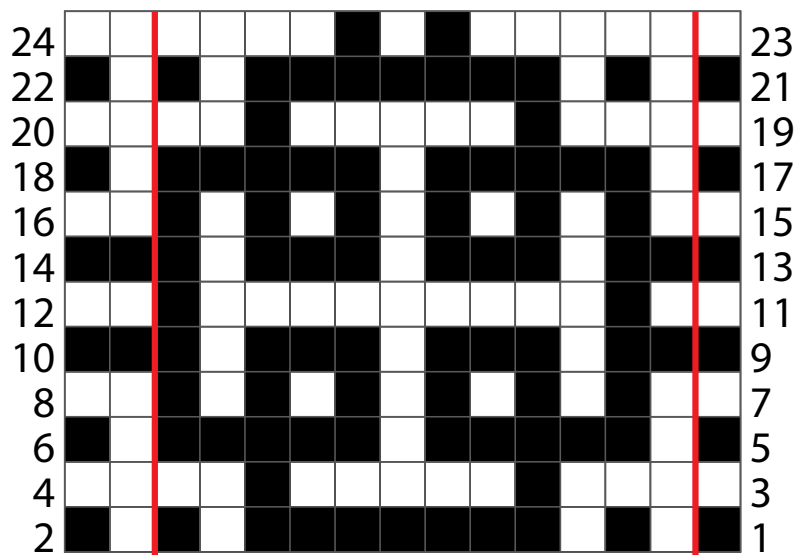
12-st repeat

Fretted Band



6-st repeat

Jerusalem Cross



12-st repeat

PLACEMAT 1

With A, long-tail cast on 98 sts. Knit 1 WS row.

Using A as MC and B as CC, work Rows 1-12 of Fretted Band pattern, then rep Rows 1-2 once more.

Note: In the following section, the multiple for the Little Squares pattern will not match the multiple shown on the chart; this is intentional. Simply begin with the first 2 stitches on the chart, work the 8-stitch multiple across to the last stitch, then knit the last stitch of the row in the color you are using.

Using B as MC and A as CC, work Rows 1-16 of Little Squares pattern 7 times, then rep Rows 1-14 once more.

Using A as MC and B as CC, work Rows 1-12 of Fretted Band pattern, then rep Rows 1-2 once more. Cut B.

With A, knit 2 rows. Bind off.
Weave in ends.

PLACEMAT 2

Use C as MC and A as CC throughout.

With C, long-tail cast on 99 sts. Knit 1 WS row.

Work Rows 1-24 of Jerusalem Cross pattern, then rep Rows 1-22 once more.

With C, knit 2 rows.

Work Rows 1-24 of Lattice pattern twice, then rep Rows 1-2 once more.

With C, knit 2 rows.

Work Rows 1-24 of Jerusalem Cross pattern, then rep Rows 1-22 once more. Cut A.

With C, knit 2 rows. Bind off.
Weave in ends.